

Magnetic Plate

Specification

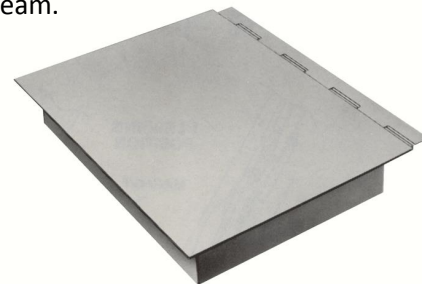
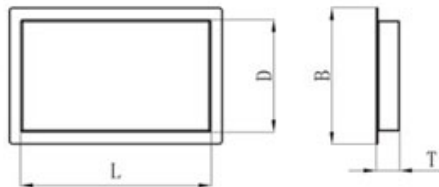
English Version
For reference only

General Introduction Magnetic plate can remove tramp iron such as Bolts, Nuts, Bits of Wire, Nails and other casual impurities from free flowing materials, like gravel, corn, sugar, plastic, flour and other granular materials in the conveying course.
Four models of magnetic plates are available: Flush Face, Exposed Pole, Spout and Suspended

- Features**
- Surface material is 304 or 316L stainless steel, good corrosion resistance and no pollution .
 - Easy cleaning and assembling.
 - Dimension and extra parts, such as hinge, handle, or mounting hole can be custom made.
 - Different magnetic action range plate with strong magnetic strength are available .

Model Instruction **Flush Face Magnetic Plate**
Flush Face Magnetic Plate has ideal metal separation performance when assembled over the flow chute or belt applications with low-density product flows. Downstream processing facilities will be under continuous magnetic protection because plate magnets can lift ferrous tramps out of the product flow stream.

Max magnetic strength is 12000Gs

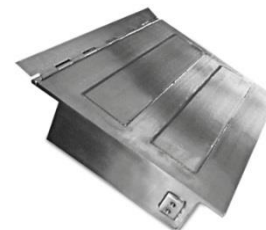
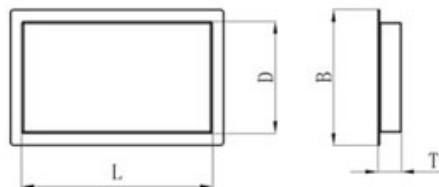


	B	D	T	Magnets Action Range	Weight
	mm	mm	mm		kg
FMP-FF60	250	175	51	60	6
FMP-FF120	300	225	76	120	7
FMP-FF150	450	360	111	150	10
NMP-FF60	190	125	36	60	8
NMP-FF120	250	175	46	120	9
NMP-FF150	330	240	56	150	11

Note: L can be decided by customer.

Exposed Pole Magnetic Plate

Exposed Pole Magnetic Plate is designed for removing tramp metals from the low volume materials flow. They will be installed below the materials flow in the process line.



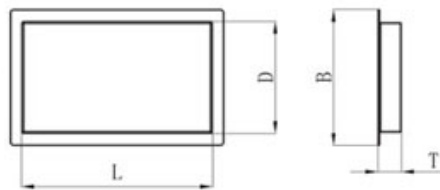
	B	D	T	Magnets Action Range	Weight
	mm	mm	mm		kg
FMP-EP60	250	175	51	60	6
FMP-EP120	300	225	76	120	7
FMP-EP150	450	360	111	150	10
NMP-EP60	190	125	36	60	8
NMP-EP120	250	175	46	120	9
NMP-EP150	330	240	56	150	11

Note: L can be decided by customer.

Spout Magnetic Plate

Spout Magnetic Plate is designed to remove ferrous tramp metal from high volume material flow or rapid material flow.

Properly designing can prevent wash-off of ferrous tramps and fines.

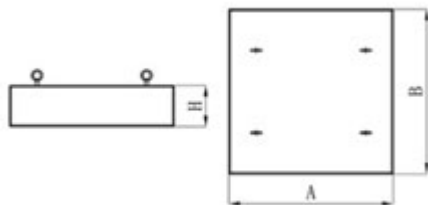


	B	D	T	Magnets Action Range	Weight
	mm	mm	mm		kg
FMP-SM60	250	175	51	60	6
FMP-SM120	300	225	76	120	7
FMP-SM150	450	360	111	150	10
NMP-EP60	190	125	36	60	8
NMP-EP120	250	175	46	120	9
NMP-EP150	330	240	56	150	11

Note: L can be decided by customer.

Suspended Magnetic Plate

Suspended Magnetic Plate is designed for effective tramp metals extraction from the high volume material by installation above Conveyors. Using big size ferrite and properly designed configuration ensure the tramp iron can be taken from thick layer material flow by heavy duty plate. For fine metal powders in thin layer material flow, light duty plate made of rare earth magnet is available also. Supplied with deep mounting tapped holes in the back of plate or four eye bolts, these magnetic plates can be rigidly mounted with threaded bolts or suspended by eye bolts using cable or chain



	H	A	B	Magnets Action Range	Weight
	mm	mm	mm		kg
MP-SPM18	180	400	400	180	145
MP-SPM25	250	500	500	200	174
MP-SPM25		600	600		292
MP-SPM25		700	700		400
MP-SPM35	350	800	800	220	470
MP-SPM35		900	900		900
MP-SPM40	400	1000	1000	240	1150
MP-SPM40		1100	1100		1600