

# Magnetic Drawer

---

## Specification

English Version  
For reference only

**General Introduction**

Magnetic Drawers are designed for efficient fine iron and ferromagnetic contamination removing from a range of dry free flowing powdery, scrap, granule product such as sugar, grain, tea, etc. They are widely used in field of ceramics, chemicals, pharmacy, food, plastic, rubber, dyestuff, mining, environmental protection, etc.

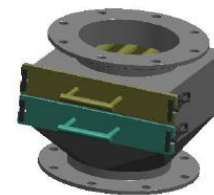
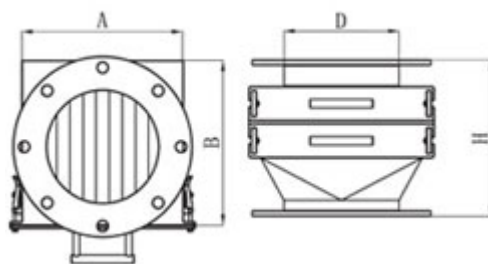
Two models of magnetic drawers are available: Normal Model and Easy-cleaning Model

**Features**

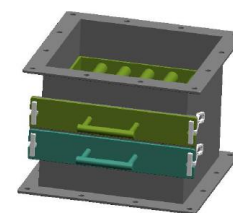
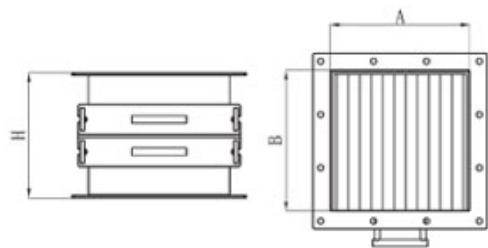
- Normal magnetic drawer (N Model) with max magnetic strength 12000Gs and Easy-cleaning magnetic drawer (E Model) with max 8000Gs are available.
- Square chutes and round pipelines flange can be chosen to suit each customer's requirement for easy installation.
- Standard working temperature  $\leq 80^{\circ}\text{C}$ , if needed, Max working temperature from  $80^{\circ}\text{C}$  to  $350^{\circ}\text{C}$  is also available.
- One row, two rows or more rows magnetic grid can be produced according to customer requirement.
- Housing and magnetic tube material are 304 or 316L stainless steel as customer request.

**Model Instruction**

**Normal Magnetic Drawer (N Model)**



	D	H	A	B	Weight
	mm	mm	mm	mm	kg
d-NR-150	159	286	208	205	15
d-NR-200	219	286	258	255	25
d-NR-250	273	286	308	305	45
d-NR-300	325	286	358	355	56
s-NR-150	159	216	208	205	12
s-NR-200	219	216	258	255	25
s-NR-250	273	216	308	305	37
s-NR-300	325	216	358	355	46



	H	A	B	Weight
	mm	mm	mm	kg
d-NS-2020	270	208	205	13
d-NS-2525	270	258	255	18
d-NS-3030	270	308	305	35
d-NS-3535	270	358	355	50
d-NS-4040	270	408	405	68
s-NS-2020	200	208	205	10
s-NS-2525	200	258	255	15
s-NS-3030	200	308	305	32
s-NS-3535	200	358	355	40
s-NS-4040	200	408	405	56

"d" - double rows

"N" - standard Model

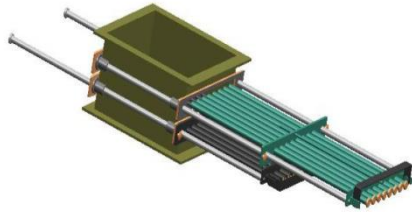
"R" - round flange top

"s" - single row

"S" - square flange top

**Easy-cleaning Magnetic Drawer (E Model)**

Externally isolate the product flow, release the securing bolts and withdraw the easy-clean grid assembly. Once the Easy-Clean Grid magnet is extracted from the housing, simply enable the release mechanism, pull the magnetic cores out of the Stainless Steel cartridge and the contamination simply falls away.



Specification is same as N model drawer magnet.